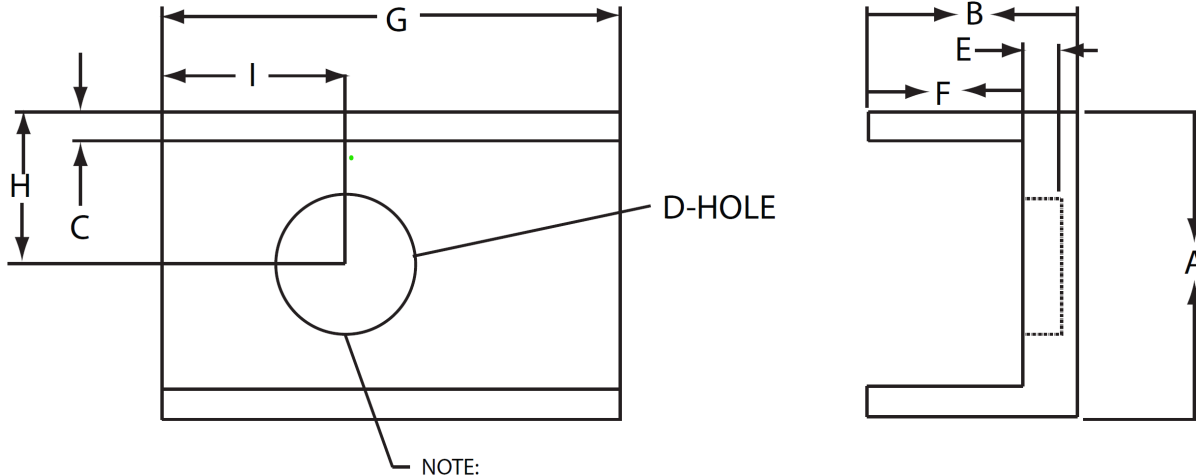


# Board Mounted Product Removal Tool



NOTE:

1. PLACE ADHESIVE IN HOLE AND THEN MAGNETIC FOR PERMANENT PLACEMENT TO TOOL. ADHESIVE MUST BE BELOW MAGNET
2. CURE THE ASSEMBLY FOR 30 MINUTES AT 150 DEG. C.

Tool Dimensions									
Products	A	B	C	D	E	F	G	H	I
HW004/5/6/010	1.250	0.500	0.040	0.290	0.105	0.240	2.000	0.550	0.460
Austin Lite	0.625	0.500	0.030	0.290	0.105	0.140	1.400	0.312	0.270
KW006 / 010 / 015 / 020 / 025	1.400	0.500	0.030	0.290	0.030	0.250	1.000	0.750	0.400
SC/SW001/003	1.250	0.500	0.050	0.290	0.105	0.220	1.000	0.550	0.320
Mini Lynx (AXA/AXH003)	0.625	0.500	0.080	0.290	0.105	0.220	1.000	0.250	0.500
Micro Lynx (AXA/AXH005)	0.625	0.500	0.080	0.290	0.105	0.220	1.000	0.312	0.500
Micro Lynx 2 (ATA/ATH006)	0.625	0.500	0.080	0.290	0.105	0.220	1.200	0.312	0.550
Mega Lynx (ATH/ATM/ATS030)	0.625	0.500	0.030	0.290	0.105	0.260	1.400	0.312	0.500
Super Lynx (AXA/AXH016)	0.625	0.500	0.030	0.290	0.105	0.260	1.400	0.312	0.500
Super Lynx 2 (ATA/ATH016/ATM020)	0.625	0.500	0.030	0.290	0.105	0.260	1.400	0.312	0.500
Lynx (AXA/AXH010)	0.625	0.500	0.030	0.290	0.105	0.260	1.400	0.312	0.500
Lynx 2 (ATA/ATH010)	0.625	0.500	0.030	0.290	0.105	0.260	1.400	0.312	0.500
Pico Lynx (APTS/APTH003/ APXS/APXH003)	0.500	0.475	0.030	0.290	0.105	0.175	0.500	0.250	0.250
Pico Lynx (APTS/APTH006/ APXS/APXH006)	0.500	0.475	0.030	0.290	0.105	0.215	0.500	0.250	0.250
Micro TLynx (APTS/APTH012/ APXH012)	0.500	0.475	0.030	0.290	0.105	0.255	0.850	0.250	0.425
Super TLynx (APTS/APTH020)	0.500	0.475	0.030	0.290	0.105	0.255	1.400	0.250	0.500

External Parts required to assemble the removal tool:

ITEM	QTY	PER IDENT NO.	DESCRIPTION
1	1	5768K26	MAGNETIC DISC TYPE 2-17 OBTAINED FROM McMASTER-CARR
2	1	ANE 26144-BC-0000-005	ADHESIVE EPOXY OBTAINED FROM PROTAVIC AMERICA 1800-807-2294

Tool Dimensions										
Products	A	B	C	D	E	F	G	H	I	
<b>HW004/5/6/010</b>	1.250	0.500	0.040	0.290	0.105	0.240	2.000	0.550	0.460	
<b>Austin Lite</b>	0.625	0.500	0.030	0.290	0.105	0.140	1.400	0.312	0.270	
<b>KW006 / 010 / 015 / 020 / 025</b>	1.400	0.500	0.030	0.290	0.030	0.250	1.000	0.750	0.400	
<b>SC/SW001/003</b>	1.250	0.500	0.050	0.290	0.105	0.220	1.000	0.550	0.320	
<b>Mini Lynx (AXA/AXH003)</b>	0.625	0.500	0.080	0.290	0.105	0.220	1.000	0.250	0.500	
<b>Micro Lynx (AXA/AXH005)</b>	0.625	0.500	0.080	0.290	0.105	0.220	1.000	0.312	0.500	
<b>Micro Lynx 2 (ATA/ATH006)</b>	0.625	0.500	0.080	0.290	0.105	0.220	1.200	0.312	0.550	
<b>Mega Lynx (ATH/ATM/ATS030)</b>	0.625	0.500	0.030	0.290	0.105	0.260	1.400	0.312	0.500	
<b>Super Lynx (AXA/AXH016)</b>	0.625	0.500	0.030	0.290	0.105	0.260	1.400	0.312	0.500	
<b>Super Lynx 2 (ATA/ATH016/ATM020)</b>	0.625	0.500	0.030	0.290	0.105	0.260	1.400	0.312	0.500	
<b>Lynx (AXA/AXH010)</b>	0.625	0.500	0.030	0.290	0.105	0.260	1.400	0.312	0.500	
<b>Lynx 2 (ATA/ATH010)</b>	0.625	0.500	0.030	0.290	0.105	0.260	1.400	0.312	0.500	
<b>Pico Lynx (APTS/APTH003/ APXS/APXH003)</b>	0.500	0.475	0.030	0.290	0.105	0.175	0.500	0.250	0.250	
<b>Pico Lynx (APTS/APTH006/ APXS/APXH006)</b>	0.500	0.475	0.030	0.290	0.105	0.215	0.500	0.250	0.250	
<b>Micro TLynx (APTS/APTH012/ APXH012)</b>	0.500	0.475	0.030	0.290	0.105	0.255	0.850	0.250	0.425	
<b>Super TLynx (APTS/APTH020)</b>	0.500	0.475	0.030	0.290	0.105	0.255	1.400	0.250	0.500	

## Contact Us

For more information, call us at

1-877-546-3243 (US)

1-972-244-9288 (Int'l)

**OmniOn Power Inc.**

601 Shiloh Rd.  
Plano, TX USA

[omnionpower.com](http://omnionpower.com)

We reserve the right to make technical changes or modify the contents of this document without prior notice. OmniOn Power does not accept any responsibility for errors or lack of information in this document and makes no warranty with respect to and assumes no liability as a result of any use of information in this document.

We reserve all rights in this document and in the subject matter and illustrations contained therein. Any reproduction, disclosure to third parties or utilization of its contents – in whole or in parts – is forbidden without prior written consent of OmniOn Power. This document does not convey license to any patent or any intellectual property right. Copyright© 2023 OmniOn Power Inc. All rights reserved.